



Install C3 using TCP/IP mode of communication

C3 controller supports the connection from panel to server over RS485 data line and also via nodes on TCP/IP Ethernet networks. This greatly increases the flexibility of installation options.

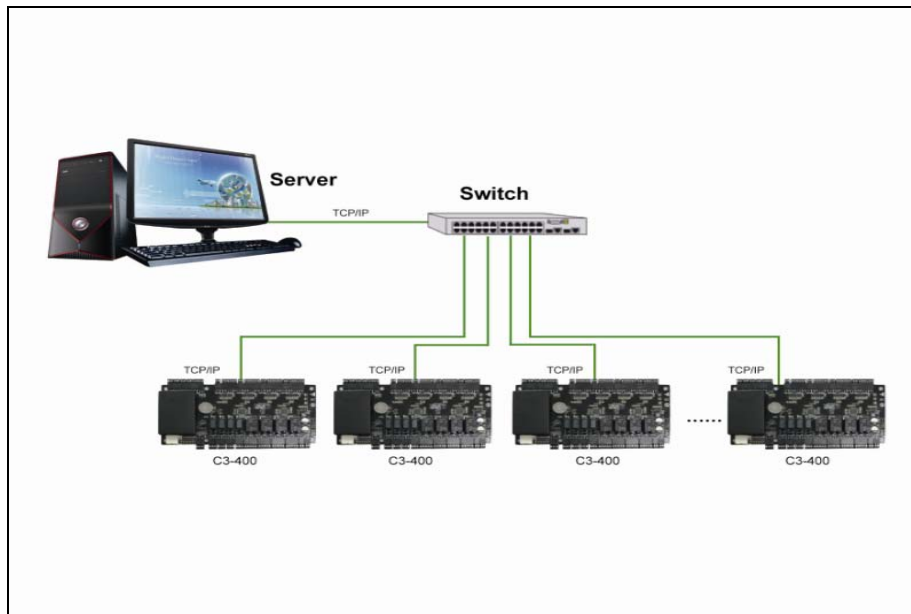
Note: Make sure the devices are in the same LAN network with server or directly connect to the server using the TCP/IP communication.

TCP/IP Connection Cable Mode

There are two ways to connect to C3 controller.

- ① Network cable directly connects Management host and the device, without a hub.
- ② In a large office a hub/switch is needed to connect more than 2 devices.

The configuration is as follows:



TCP/IP Communication

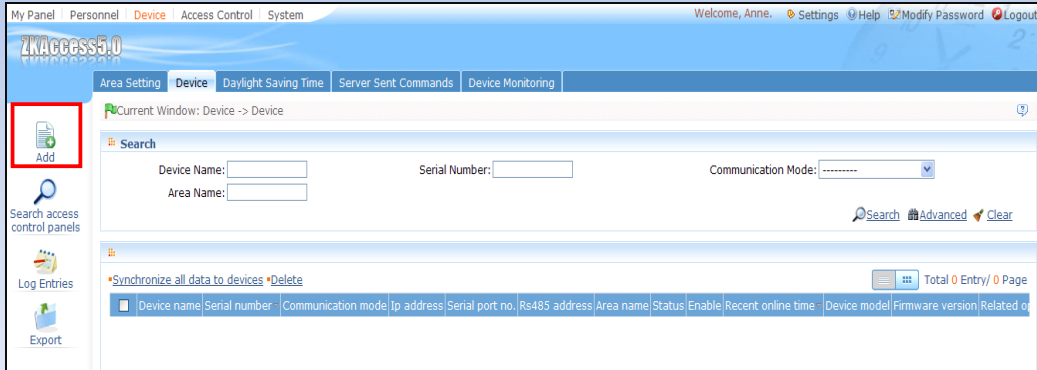
How to add a device into ZKAccess software?

ZKAccess provides two ways to add a device.

- ① **When the IP address of the device is already known, you can quickly add it by entering the IP address as follow:**

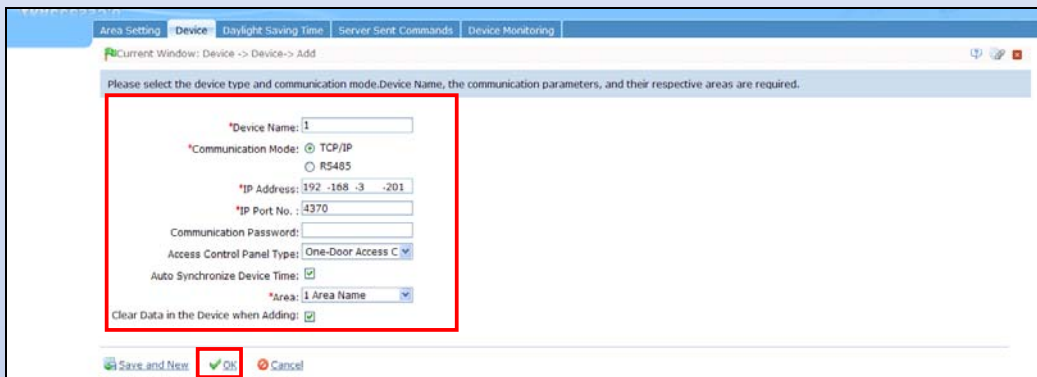
Click [Add] on the [Device-Device] interface.





As the interface appears, write the [Device Name], then give the [IP address] of the device. The [IP Port No.] is defaulted to 4370 by the system. Please set the password if needed.

Note: Select the type of the device. If it is a Four-Door-One-Way Access Control Panel there will appear an extra option-[Switch to Two-door Two-way]. Select as appropriate according to the actual device.



Select the [Area] the device belongs to. If you do not want to clear the data (Information in Time zones, Access Levels, etc.) in the device when adding, remove the check beside the [Clear Data in the Device when adding] option. Click [OK] to add the device.

② Click [Search Access Control Panels] option on the [Device-Device] interface.

Click [Search], after searching, the usable device will show in the results list. Modify the IP address to available IP, and then add the device.

Search for the access control panels on the TCP/IP network.

Search

Search result

The total number of access control panels found now is:29

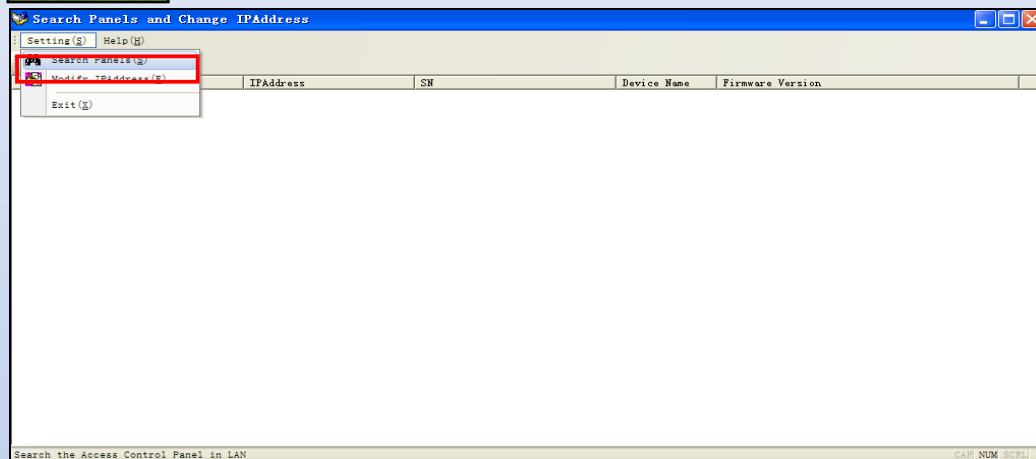
IP Address	MAC Address	Subnet Mask	Gateway	Serial Number	Device Type	Operation
192.138.3.90	00:17:61:10:08:61	255.255.255.0	192.168.1.254	4602011070145	inBI0460	Modify IP Address Add Device
192.168.3.91	00:17:61:10:04:28	255.255.255.0	192.168.1.254	2602011070064	inBI0260	Modify IP Address Add Device
192.168.8.126	00:17:61:7F:18:C8	255.255.255.0	192.168.8.254	41257896321		Modify IP Address Add Device
192.168.8.127	00:17:61:18:00:E2			201008260058	ACP	Modify IP Address Add Device
192.168.8.136	00:17:61:7F:0F:61	255.255.255.0	192.168.8.254	47474874874845		Modify IP Address Add Device
192.168.10.100	00:17:61:C0:2F:BA			4052010103219	C3_400	Modify IP Address Add Device
192.168.12.231	00:17:61:7F:2D:AC	255.255.255.0	192.168.12.231	20100501999	ACP	Modify IP Address Add Device

Using fast search tool to modify the IP address of a device

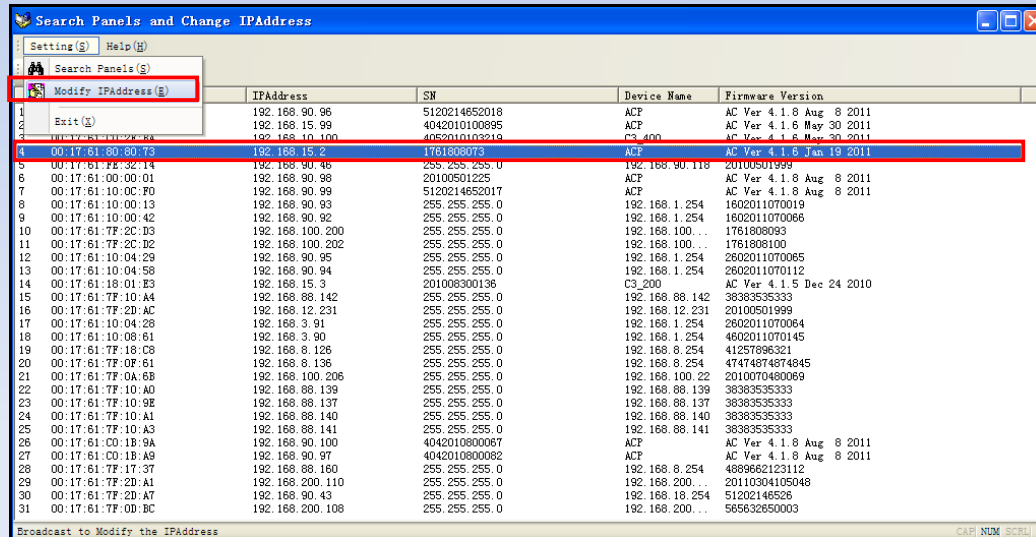
ZK provides a fast search tool for searching devices and modifying the IP addresses. This allows devices to be added directly without modifying the system, which is inconvenient and time consuming.

The tool and the operation of searching and modifying are as follows:

Click [Search Panel] on the [Setting] dropdown menu.



After a few seconds results for the usable devices will appear.



Click to select the device and [Modify IP Address] on the [Setting] dropdown menu to modify the IP address of the devices.